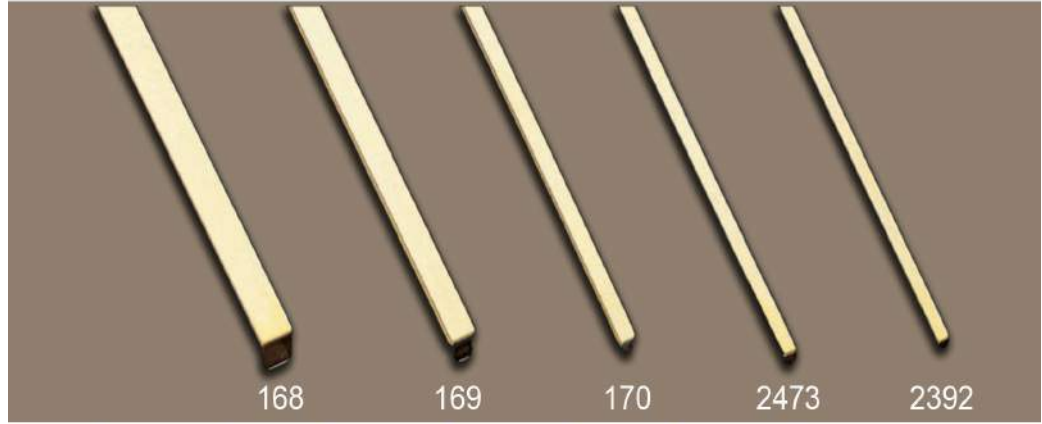


## STERN METALS

### FANCY TUBING

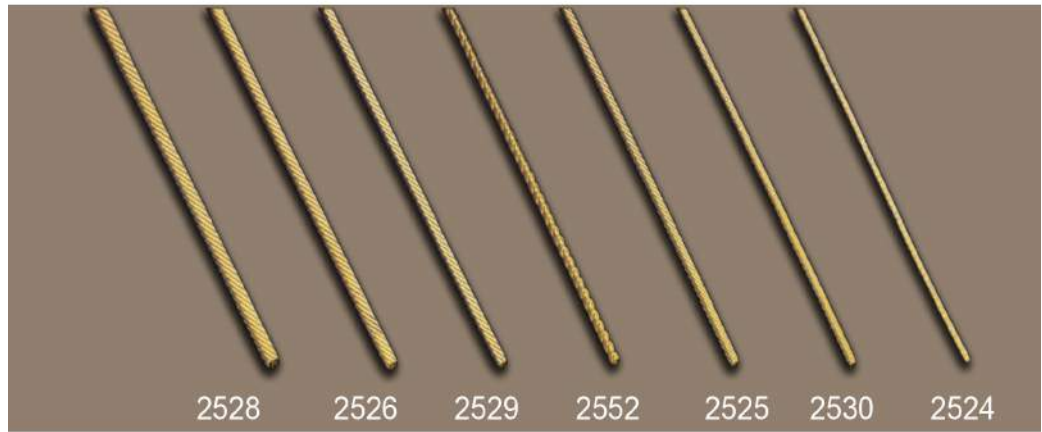
#### Squares

168	.218sq. x .030w
169	.188sq. x .030 -.014w
170	.126sq. x .035w. - .025w
2473	.098sq. x .010w
2392	.087sq. x .009w



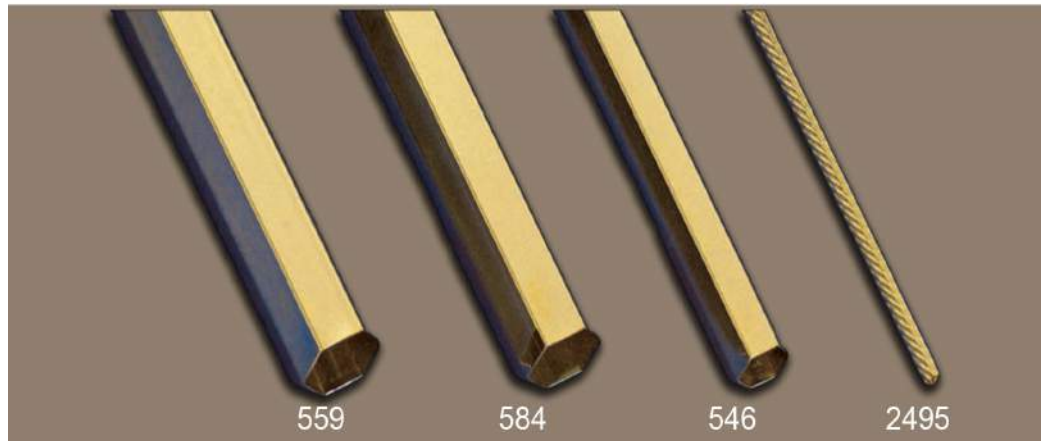
#### Spiral Squares

2528	.090sq x .005w
2526	.080sq x .005w
2529	.070sq x .005w
2552	.060sq x .005w
2525	.060sq x .005w
2530	.050sq x .005w
2524	.040sq x .005w



#### Hexagons

559	.455sq x .011w
584	.430sq x .010w
546	.314sq x .011w
2495-F	.096sq x .006w



## STERN METALS

### FANCY TUBING

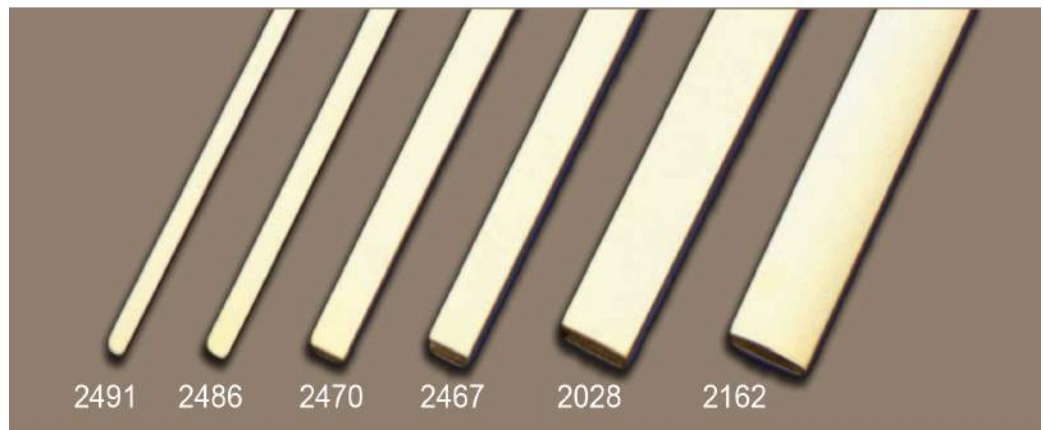
#### Patterns

2527	.071 x .005w
1844	.193 x .116 X .015w
2551	.162 x .100 X .008w
2384	.155 x .115 x .010w
2428	.4902 x .203 x .014w



#### Rectangles

2491	.137 x .035 x .007w
2486	.165 x .035 x .007w
2470	.265 x .065 x .015w
2467	.310 x .120 x .020w
2028	.500 x .125 x .023w
2162	.562 x .105 x .010w



#### Half Rounds

2412	.113 x .062 x .010w
1802	.156 x .094 x .009w
2518	.165 x .070 x .007w
538	.251 x .126 x .009w



## STERN METALS

### FANCY TUBING

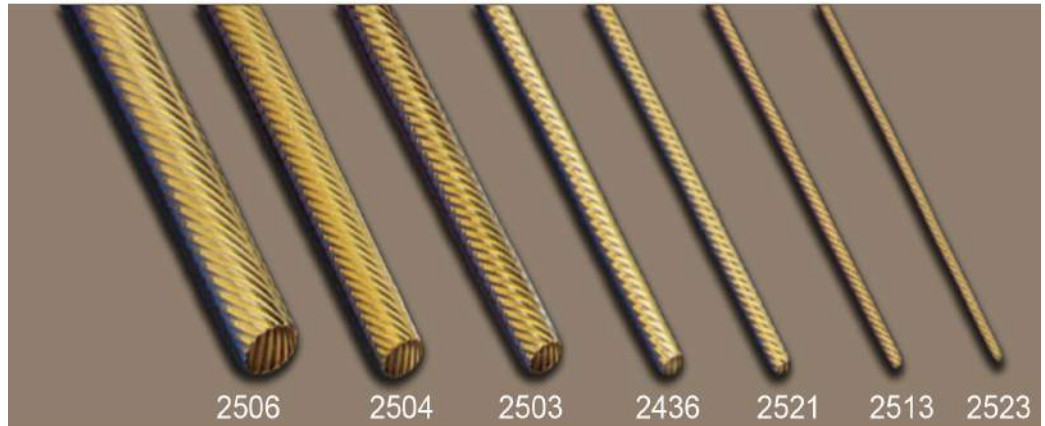
#### Ovals

50A	.434 x .190 x .017w
2544	.414 x .213 x .008w
107	.213 x .193 x .012w
2155	.187 x .101 x .008w
2553	.115 x .044 x .005w



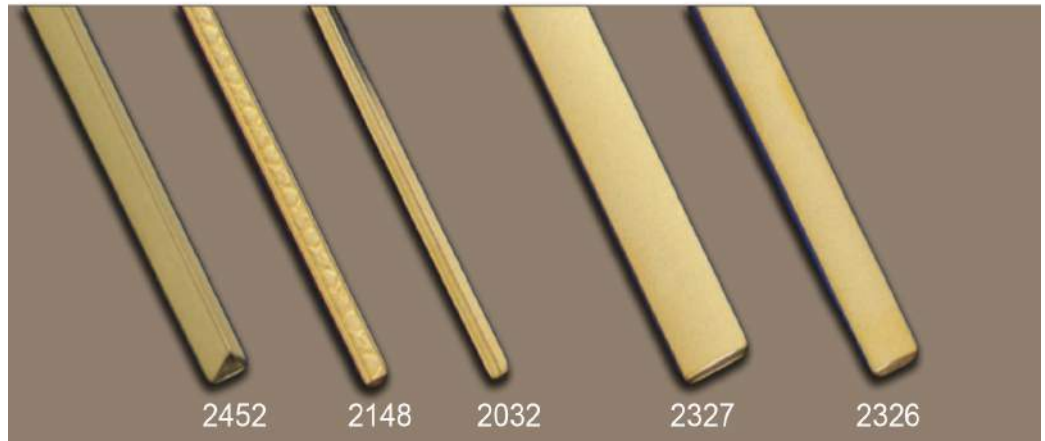
#### Corrugated

2506	.354 x .006w
2504	.275 x .006w
2503	.235 x .006w
2436	.159 x .005w
2521	.120 x .005w
2513	.080 x .005w
2523	.064 x .0055w



#### Concaves

2327	.415 x .081 x .009w
2326	.306 x .081 x .009w



#### Domes

2452	.281 x .250 x .010w
2148	.160 x .088 x .012w
2032	.136 x .061 x .010w

## STERN METALS

### FANCY TUBING

#### Half Rounds

867	.100 X .397
3043	.034 X .184
3081	.042 X .152
4060	.080 X .400
4188	.035 X .097
4295	.025 X .080 X .360
4297	.025 X .067 X .315

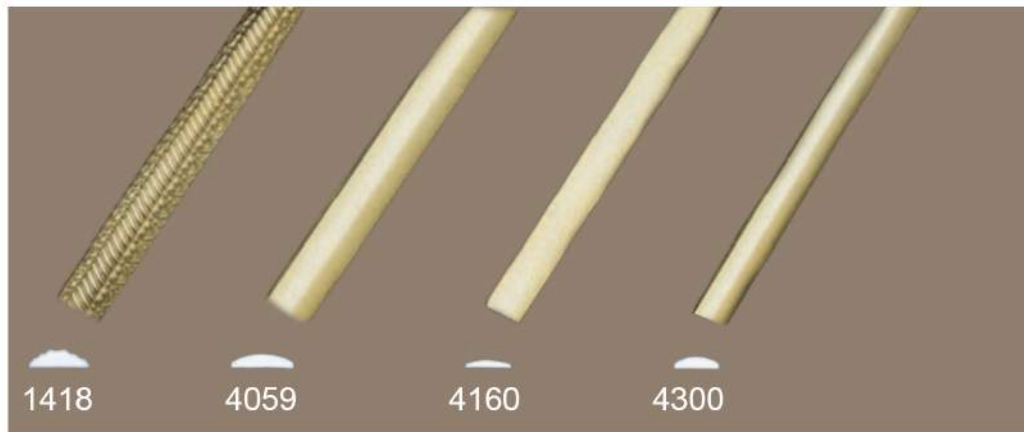
tooling exists from  
.005 x .012 to .250 x .562



#### Domes

1418	.096 X .316
4059	.025 X .080 X .330
4160	.046 X .252
4300	.025 X .067 X .240

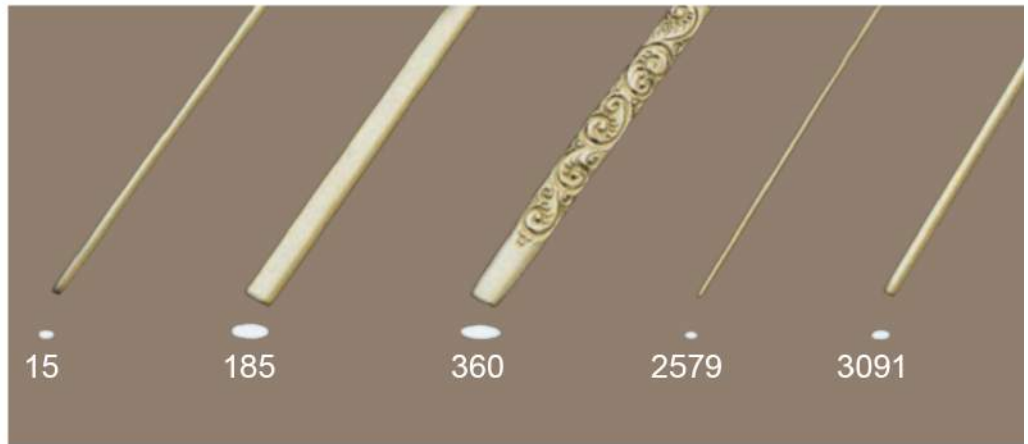
tooling exists from  
.059 x .070 to .135 x .500



#### Shads

15	.046 X .084
185	.080 X .197
360	.087 X .239
3579	.032 X .053
3091	.055 x .102

tooling exists from  
.022 x .032 to .101 x .375



#### Low Domes

2955	.073 X .355
3070	.049 X .375

tooling exists from  
.059 x .070 to .135 x .500

